



# Redox imbalance links COVID-19 and myalgic encephalomyelitis/chronic fatigue syndrome

Bindu D. Paul<sup>a,b,c,1</sup>, Marian D. Lemle<sup>d</sup>, Anthony L. Komaroff<sup>e</sup>, and Solomon H. Snyder<sup>a,b,c,1</sup>

Edited by Maureen R. Hanson, Cornell University, Ithaca, NY, and accepted by Editorial Board Member Philippa Marrack June 25, 2021 (received for review February 28, 2021)

Although most patients recover from acute COVID-19, some experience postacute sequelae of severe acute respiratory syndrome coronavirus 2 infection (PASC). One subgroup of PASC is a syndrome called “long COVID-19,” reminiscent of myalgic encephalomyelitis/chronic fatigue syndrome (ME/CFS). ME/CFS is a debilitating condition, often triggered by viral and bacterial infections, leading to years-long debilitating symptoms including profound fatigue, postexertional malaise, unrefreshing sleep, cognitive deficits, and orthostatic intolerance. Some are skeptical that either ME/CFS or long COVID-19 involves underlying biological abnormalities. However, in this review, we summarize the evidence that people with acute COVID-19 and with ME/CFS have biological abnormalities including redox imbalance, systemic inflammation and neuroinflammation, an impaired ability to generate adenosine triphosphate, and a general hypometabolic state. These phenomena have not yet been well studied in people with long COVID-19, and each of them has been reported in other diseases as well, particularly neurological diseases. We also examine the bidirectional relationship between redox imbalance, inflammation, energy metabolic deficits, and a hypometabolic state. We speculate as to what may be causing these abnormalities. Thus, understanding the molecular underpinnings of both PASC and ME/CFS may lead to the development of novel therapeutics.

COVID-19 | chronic fatigue syndrome | myalgic encephalomyelitis | redox | mitochondria

Acute COVID-19, caused by the severe acute respiratory syndrome coronavirus 2 (SARS-CoV-2), can be a severe and even fatal disease. Beyond the acute illness, some survivors of COVID-19, even those who are only moderately ill during the acute infection, experience postacute sequelae of severe acute respiratory syndrome coronavirus 2 infection (PASC). They report persisting, debilitating symptoms that last for months (1). In some people, these symptoms may be secondary to COVID-19–induced damage to the lung (hypoxia) and heart (reduced cardiac output) (2), skeletal muscle (3), kidneys (abnormal acid-base or fluid balance), or brain (small infarcts or hemorrhages) (4). However, some of these PASC patients, without apparent organ damage, also have persisting, debilitating symptoms (an illness called “long COVID-19”) that are similar to myalgic encephalomyelitis/chronic fatigue syndrome (ME/CFS) (5).

ME/CFS is a complex, multisystem disorder leading to debilitating symptoms including profound fatigue, postexertional malaise, unrefreshing sleep, cognitive deficits, and orthostatic intolerance. The US Centers for Disease Control and Prevention and the US National Academy of Medicine estimate that 836,000 to 2.5 million people have ME/CFS in the United States alone (6). Many cases occur following what appears to be a common, infectious-like illness. However, diagnostic tests are rarely performed to document the responsible infectious agents. Postinfectious fatigue syndromes also follow in the wake of well-documented acute infections with multiple viruses, bacteria, and even parasites (5).

In this review, we speculate that the symptoms of both long COVID-19 and ME/CFS may stem from redox imbalance—which in turn, is linked to inflammation and energy metabolic defects.

<sup>a</sup>Department of Pharmacology and Molecular Sciences, Johns Hopkins University School of Medicine, Baltimore, MD 21205; <sup>b</sup>Department of Psychiatry and Behavioral Sciences, Johns Hopkins University School of Medicine, Baltimore, MD 21205; <sup>c</sup>The Solomon H. Snyder Department of Neuroscience, Johns Hopkins University School of Medicine, Baltimore, MD 21205; <sup>d</sup>Solve ME/CFS Initiative, Glendale, CA 91206; and <sup>e</sup>Department of Medicine, Brigham & Women’s Hospital, Harvard Medical School, Boston, MA 02120

Author contributions: B.D.P., M.D.L., A.L.K., and S.H.S. analyzed data and wrote the paper.

The authors declare no competing interest.

This article is a PNAS Direct Submission. M.R.H. is a guest editor invited by the Editorial Board.

This open access article is distributed under [Creative Commons Attribution-NonCommercial-NoDerivatives License 4.0 \(CC BY-NC-ND\)](https://creativecommons.org/licenses/by-nc-nd/4.0/).

<sup>1</sup>To whom correspondence may be addressed. Email: [bpaul8@jhmi.edu](mailto:bpaul8@jhmi.edu) or [ssnyder@jhmi.edu](mailto:ssnyder@jhmi.edu).

This article contains supporting information online at <https://www.pnas.org/lookup/suppl/doi:10.1073/pnas.2024358118/-/DCSupplemental>.

Published August 16, 2021.

## Redox Imbalance Occurs in Both COVID-19 and ME/CFS

**Oxidative and Nitrosative Stress.** Oxidative and nitrosative stress have been reported in both acute COVID-19 and ME/CFS. Oxidative stress involves imbalance between reactive oxygen species (ROS) and antioxidant defense mechanisms. Nitrosative stress is characterized by excess reactive nitrogen species (RNS), such as peroxynitrite ( $\text{ONOO}^-$ ), generated by reaction of nitric oxide (NO) with superoxide anions ( $\text{O}_2^{\cdot-}$ ). NO has important physiological functions (including vasodilation and neurotransmission). However, increased RNS with excessive NO production can be at least as damaging as ROS and also can directly attack several antioxidant enzymes, including catalase (7). Thus, oxidative stress and nitrosative stress are linked bidirectionally.

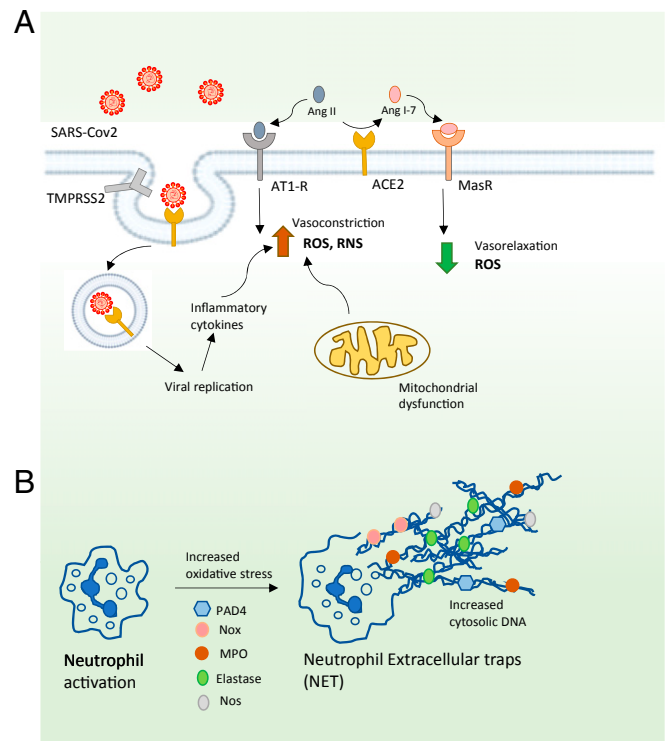
Like NO, ROS mediates physiologic cellular signaling and defense against pathogens. However, excessive ROS, when not adequately countered by antioxidants, damage cellular components including proteins, lipids, and DNA (8, 9).

**Redox Imbalance in Acute COVID-19.** Multiple examples of redox dysregulation have been reported in acute COVID-19, as is typical of many viral infections (10, 11). Overall levels of serum thiols are decreased in the serum of COVID-19 patients (12). As depicted in Fig. 1A, COVID-19 induces redox imbalance, in part because SARS-CoV-2 uses the angiotensin converting enzyme 2 (ACE2) receptor to enter cells (13, 14). This leads to accumulation of  $\text{O}_2^{\cdot-}$  as well as ROS and RNS by inducing mitochondrial dysfunction and production of proinflammatory cytokines (15).

In a computational study, binding affinity was significantly impaired when the disulfide bonds of both ACE2 and SARS-CoV-2 spike protein, which binds ACE2, were reduced to thiol groups (16). The spike protein has 40 cysteine residues, some of which contribute to the stability of interaction with the ACE2 receptor on the host (17). Analysis of the crystal structure of the spike protein with the ACE2 receptor revealed that the Cys480–Cys488 pair of the spike protein participates directly in binding to the ACE2 (18, 19). Similarly, certain cysteine residues on the ACE2 protein of the host play key roles in the interaction between the two proteins. A disulfide bond between Cys133 and Cys141 is present at the dimer interface, which has been linked to susceptibility to COVID-19 (17). Cattle and swine have a leucine residue at position 133 and are resistant to SARS-CoV-2.

Elderly subjects are more vulnerable to severe COVID-19. A linear oxidation of the plasma cysteine/cystine redox state over the entire age span and that of reduced glutathione/oxidized glutathione (GSH/GSSG) occur after ~45 y (20). The age-dependent decrease in thiol/disulfide ratio of extracellular fluids could modulate interaction of CoV-2 with the host cell in the airways. This redox-modulated binding is expected to affect the risk of severe infection in an age-dependent manner (21). Similarly, low levels of the antioxidant enzyme, alveolar Type II cell superoxide dismutase 3 (SOD3), in the lungs of the elderly correlate with severity of COVID-19 (12).

**Redox Imbalance in ME/CFS.** In people with ME/CFS, there are multiple biomarkers of oxidative stress: reduced levels of antioxidants (22); decreased levels of  $\alpha$ -tocopherol (23); increased levels of peroxides and superoxide that correlate with severity of symptoms (24); increased levels of isoprostanes, both at rest and after exercise (25); and reduced levels of thiobarbituric acid reactive substances and malondialdehyde levels, as well as reduced ascorbic acid and glutathione levels (26–30). These markers of redox imbalance also



**Fig. 1. Oxidative stress in COVID-19. (A) The ACE2 pathway.** SARS-CoV-2 infects cells harboring ACE2 and the protein transmembrane protease, serine 2 (TMPRSS2); together, these molecules prime the viral spike protein S, facilitating its entry by endocytosis. ACE2 converts angiotensin II (Ang II) to angiotensin 1 to 7 (Ang 1–7). This decreases ACE2 and elevates Ang II, which acts through the angiotensin 1 receptors (AT1-Rs), causing accumulation of superoxide radicals ( $\text{O}_2^{\cdot-}$ ) leading to hypertension and inhibition of vasodilation. Ang 1–7 binds the G-protein-coupled Mas receptor MasR, mediates vasorelaxation, and decreases  $\text{O}_2^{\cdot-}$  production. SARS-CoV-2 induces formation of reactive oxygen radicals (ROS) and RNS by eliciting mitochondrial dysfunction and production of proinflammatory cytokines. **(B) The NETs.** NETs are web-like structures extruded from activated neutrophils, comprising proteins assembled on a scaffold of decondensed chromatin, which target invading pathogens. The component proteins include oxidative and proinflammatory enzymes such as NADPH oxidase (Nox), neutrophil elastase, myeloperoxidase (MPO), NOS, and peptidyl arginine deiminase 4 (PAD4), which deaminates arginine to citrulline, resulting in the formation of citrullinated proteins (such as histone H3, causing its dissociation from DNA). Excessive accumulation of NETs causes inflammation and damage in COVID-19.

correlate with severity of symptoms (24, 31, 32). Brain magnetic resonance spectroscopy (MRS) reveals elevated levels of ventricular lactic acid consistent with oxidative stress (33–35).

When compared with healthy control subjects, people with ME/CFS also have multiple biomarkers of nitrosative stress: increased inducible nitric oxide synthase (NOS) with consequent increased NO, peroxynitrite, and nitrate, particularly following exercise (36, 37).

Immune responses to oxidized fatty acids (oleic, palmitic, and myristic acids) and markers of lipid peroxidation (such as malondialdehyde, acetylcholine, S-farnesyl-L-cysteine, and several NO-modified amino acids) also are significantly greater in ME/CFS patients as compared with controls (38, 39).

Metabolomic studies in plasma from ME/CFS subjects are consistent with these findings, revealing altered plasma levels of choline, carnitine, and complex lipid metabolites—consistent with oxidative stress and mitochondrial dysfunction (40–43).

## Elevated Levels of Prooxidants in COVID-19 and ME/CFS

As summarized in Table 1, increased levels of prooxidants have been reported in both acute COVID-19 and ME/CFS.

**Dysregulated Heme and Iron Homeostasis.** Increased levels of free iron in cells (44) and increased ferritin levels (45) both can cause oxidative damage (44). Iron stored in heme molecules is degraded via the bilirubin pathway, an important component of antioxidant defense (46, 47). Evidence of dysregulated heme and iron homeostasis has been reported in acute COVID-19 and ME/CFS (Table 1).

**Homocysteine.** Elevated levels of the amino acid homocysteine, seen in both acute COVID-19 and ME/CFS (Table 1), cause increased oxidative stress and are a risk factor for various cardiovascular diseases and dementia. Elevated homocysteine levels may indicate suboptimal activities of reverse transsulfuration enzymes or dysregulation of their cofactors and/or regulators (44, 48, 49).

**Neutrophil Extracellular Traps.** Neutrophils attack invading pathogens by forming neutrophil extracellular traps (NETs) and generating both ROS and RNS (50–53) (Fig. 1B). Abnormalities of

neutrophil biology have been reported in both acute COVID-19 and ME/CFS (Table 1).

**Abnormal Metabolism Involving the Gaseous Signaling Molecules NO and Hydrogen Sulfide.** The major gaseous signaling molecules include NO, carbon monoxide, and hydrogen sulfide (H<sub>2</sub>S). They play key roles in the regulation of blood pressure, inflammation, and neurotransmission (54, 55). Under physiological conditions, both NO and H<sub>2</sub>S have anti-inflammatory effects (48, 56). However, both deficient and excess production of these gaseous signaling molecules can create brain pathology, immune dysfunction, and redox imbalance (56, 57).

**NO.** NOS2 is significantly up-regulated in patients with severe and critical COVID-19 (58). There is evidence of nitrosative stress and disordered NO metabolism in people with ME/CFS (38). Levels of NO are higher in ME/CFS patients, which can accelerate nitrosative stress (27). Citrulline, a product of arginine metabolism by NOS, also is increased in ME/CFS (59).

**H<sub>2</sub>S.** Normal H<sub>2</sub>S metabolism protects against inflammation and redox imbalance (48, 60, 61). One of the modes by which H<sub>2</sub>S functions is by a posttranslational modification termed persulfidation or sulphydration (48, 62), which prevents irreversible oxidation of

**Table 1. Redox-related alterations shared by both COVID-19 and ME/CFS**

Redox-related alteration	COVID-19	ME/CFS
Iron and heme metabolism	Hyperferritinemia (171–174) Elevated bilirubin levels (175) Decreased bilirubin (176)	Decreased serum transferrin, elevated heme (26, 43)
Homocysteine	Increased blood levels (177, 178)	Increased cerebrospinal fluid levels (179)
Elevated superoxide levels	Negative correlation between decreased SOD3 in lungs of elderly patients with COVID-19 and disease severity (12)	Decreased expression and activity of SOD (27, 180)
Neutrophil response	In severe disease, elevated numbers of neutrophils and a high neutrophil to lymphocyte ratio; high ratio positively correlated with mortality (90, 120, 181); NETs observed	Neutropenia and a reduced oxidative burst (182), possibly secondary to an initially aggressive neutrophil response, had led to neutrophil exhaustion, similar to lymphocyte exhaustion seen (182)
NO	NOS2 is significantly up-regulated in patients with severe disease (58)	High levels of NO (27, 38); citrulline, a product of arginine metabolism by NOS, also increased (59)
H <sub>2</sub> S	Survivors have higher serum levels of H <sub>2</sub> S and higher numbers of circulating lymphocytes (70), perhaps because H <sub>2</sub> S stimulates T cell proliferation (71)	Dysregulation of H <sub>2</sub> S may play a role in ME/CFS (73) H <sub>2</sub> S can induce a torpor-like state in mice (74) No studies yet of H <sub>2</sub> S regulation in humans
Tryptophan metabolites	Decreased tryptophan, serotonin, and indolepyruvate levels and increased kynurenine, kynurenic acid, picolinic acid, and nicotinic acid (183) NAD metabolome depressed in SARS-CoV-2-infected cells and patient samples, and levels of NAD biosynthetic enzymes also are elevated in SARS-CoV-2-infected cells, possibly as a compensatory mechanism (184)	Nicotinamide phosphoribosyl transferase levels altered in peripheral blood mononuclear cells from ME/CFS patients (129)
Glutathione	Low blood levels of GSH in severe disease (185); severity of COVID-19 linked to decreased levels of vitamin D (185, 186)	Low GSH levels in the cortex of the brain and plasma (33, 187) Decreased SOD, catalase, glutathione peroxidase, and glutathione reductase activities in erythrocytes (27)
Cysteine	Cysteine levels decreased in serum, while levels of oxidized cysteine are higher (183) Cystine and methionine (methionine sulfoxide) increased (183)	Low levels of cystine, the oxidized form of cysteine, and increased levels of cystine and methionine (methionine sulfoxide) in the peripheral blood mononuclear cells of people with ME/CFS (188)
Selenium	Selenium levels low (189) and negatively correlated with recovery (189–191)	Unstudied
Vitamin C/ascorbate	Low plasma levels (192)	Low plasma levels (31, 193)
NAD metabolism	Nicotinamide phosphoribosyl transferase and nicotinamide riboside kinase increased (194)	Nicotinamide phosphoribosyl transferase levels increased (97)
Vitamin E levels	Low serum levels in pregnant women (195)	Decreasing serum levels correlate with severity of symptoms and levels increase in remissions (23, 196) Also, decreased levels in pediatric cases (193)

proteins (63, 64). H<sub>2</sub>S metabolism is disrupted in Alzheimer's disease, Parkinson's disease, and Huntington's disease and also, during aging (63, 65–67). H<sub>2</sub>S inhibits tau-phosphorylation, which may explain, in part, its role in protecting against Alzheimer's disease (68, 69).

Dysregulated H<sub>2</sub>S metabolism has been reported in acute COVID-19. Survivors reportedly exhibit higher serum levels of H<sub>2</sub>S and higher numbers of circulating lymphocytes (70); H<sub>2</sub>S stimulates T cell proliferation (71). Indeed, exogenous H<sub>2</sub>S therapy may be beneficial in mild to moderate COVID-19 disease (72).

Dysregulation of H<sub>2</sub>S may play a role in ME/CFS since the gas can affect adenosine triphosphate (ATP) production from oxidative phosphorylation (73). H<sub>2</sub>S can induce a torpor-like state in mice (74). However, studies of H<sub>2</sub>S regulation in people with ME/CFS have not yet been reported.

**Altered Levels of Tryptophan Metabolites.** Tryptophan serves as a precursor for nicotinamide adenine dinucleotide (NAD<sup>+</sup>) biosynthesis, making it important in redox balance. Abnormalities in the pathways by which tryptophan is transformed into serotonin or kynurenine pathway metabolites (75) have been reported in both acute COVID-19 and ME/CFS (Table 1), and can cause both oxidative stress and excitotoxicity (27).

### Reduced Levels of Small Molecule Antioxidants in Acute COVID-19 and ME/CFS

As summarized in Table 1, decreased levels of antioxidants have been reported in both acute COVID-19 and ME/CFS. Foremost among these small molecules is glutathione, which helps modulate immune activation (76, 77). Glutathione also enhances vitamin D metabolism (78) and vitamin D, in turn, reciprocally increases glutathione and decreases oxidative stress and levels of inflammatory cytokines and chemokines (79). The antioxidant small molecules also include cysteine, a semiessential amino acid synthesized endogenously via the reverse transsulfuration pathway (80) (*SI Appendix, Fig. S1*); selenium, an essential micronutrient incorporated into various selenoproteins which have antioxidant roles; vitamin C/ascorbate, which exerts antiviral and immunomodulatory effects (81) and vitamin E compounds, which have free radical scavenging and antiinflammatory activities (82).

### Impaired Energy Metabolism in COVID-19 and ME/CFS

**Impaired Energy Metabolism in Acute COVID-19.** Mitochondrial dysfunction has long been associated with fatigue (83), causes elevated oxidative stress, and could contribute to the symptoms of fatigue found in both acute COVID-19 and ME/CFS (84).

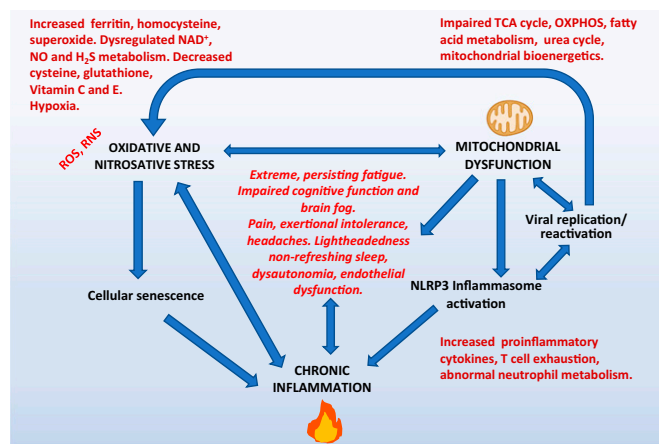
Mitochondrial dysfunction also has been linked to the pathogenesis of COVID-19. SARS-CoV-2 hijacks mitochondrial function and alters host metabolic pathways and immune response to facilitate pathogenesis. For instance, mitochondrial dysfunction triggered by SARS-CoV-2 causes accumulation of mitochondrial DNA (mtDNA) in the cytosol, leading to mtDNA-induced inflammasome activation and suppression of innate and adaptive immunity (85). The virus interferes with the RIG1-MAVS pathway to decrease type I interferon (IFN) production (86). SARS-CoV-2 infection of white blood cells leads to elevated glycolysis, increased mitochondrial reactive oxygen species (mtROS) production, and dysregulated mitochondrial bioenergetics (87, 88). In this study, the role of redox imbalance secondary to mitochondrial dysfunction in SARS-CoV-2 pathology was apparent; two potent antioxidants reduced viral load and proinflammatory cytokines. Elevated levels of lactate

dehydrogenase (LDH) were also reported in COVID-19 (89, 90), which could reflect mitochondrial dysfunction.

**Impaired Energy Metabolism in ME/CFS.** Metabolomic studies have reported evidence of impaired ATP production from oxygen, glucose, fatty acids, and amino acids in multiple cell types (41, 42, 91–94). Not just oxidative phosphorylation but also glycolysis—and possibly, the citric acid and urea cycles—are incriminated. In people with ME/CFS, there also is a more general hypometabolic state as previously proposed (73), characterized by depressed levels of most metabolites, as occurs in hibernating animals (41). Later, we speculate as to the cause of this hypometabolic state.

Both structural and functional mitochondrial abnormalities have been found in ME/CFS. Branching and fusion of mitochondrial cristae are observed in muscle biopsies of some patients (84). Although some studies have reported deletions of mtDNA genes, the most extensive controlled study using contemporary technology did not find mtDNA variants that correlated with susceptibility to ME/CFS—although it did find a correlation between specific haplogroups and mtDNA single-nucleotide polymorphisms and specific symptoms (95). Other reports have identified a deficit in Complex V (ATP synthase) activity of the electron transport chain (ETC) in lymphocytes, with a compensatory up-regulation of respiratory capacity (96, 97), and a decrease in mitochondrial membrane potential in CD8<sup>+</sup> T cells (98). Serum from ME/CFS patients reportedly contains a factor that induces mitochondrial fragmentation (99).

Clinical studies also indicate mitochondrial dysfunction. People with ME/CFS have significantly higher blood lactate levels after exercise as compared with controls, indicative of reduced oxidative phosphorylation and a switch to anaerobic glycolysis (100–102). Elevated lactate levels also have been reported in the ventricles of ME/CFS patient brains (33–35, 103). As in COVID-19, elevated serum LDH levels also are seen (104). LDH is a critically important enzyme in energy metabolism, catalyzing the bidirectional conversion of lactate to pyruvate and NAD<sup>+</sup> to reduced



**Fig. 2. The interactions between redox imbalance, mitochondrial dysfunction, chronic inflammation, and related symptoms. As explained in the text, redox imbalance, mitochondrial dysfunction, and inflammation are bidirectionally related to each other and may cause some of the symptoms of both long COVID-19 and ME/CFS. The bidirectional connections mean that an initial abnormality in one component can trigger abnormalities in other components and can precipitate a persistent, self-reinforcing pathological process.**

NAD<sup>+</sup> (NADH). Thus, an elevated level in the blood of subjects in a resting state could indicate a system struggling to generate energy. Alternatively, the elevated blood levels of LDH could indicate tissue destruction, such as occurs in malignancies or red blood cell hemolysis.

Finally, people with ME/CFS reportedly have significantly decreased levels of plasma coenzyme Q10 (CoQ10), whose levels correlate inversely with the degree of fatigue, impaired concentration and memory, and symptoms of autonomic dysfunction (105, 106). CoQ10/ubiquinone, a component of the ETC, can have both prooxidant and antioxidant effects, as well as anti-inflammatory effects (107).

The causes of mitochondrial dysfunction in people with ME/CFS remain speculative. Viral infection surely can cause impairment of mitochondrial structure (99) and function (97, 108), and impairment of mitochondrial function, in turn, encourages viral replication and T cell exhaustion (108). Immune activation, with the generation of proinflammatory cytokines, also can cause mitochondrial fragmentation, hyperpolarization of the mitochondrial membrane, and the generation of ROS (109).

### Connecting Redox Imbalance to Inflammation in COVID-19 and ME/CFS

**Connections between Inflammation and Redox Imbalance.** Systemic inflammation and neuroinflammation are seen in both acute COVID-19 and ME/CFS. Inflammation, in turn, is bidirectionally linked to redox imbalance (110); inflammation generates ROS and RNS, and redox imbalance causes cellular damage that evokes an inflammatory response, leading to vicious cycles (111, 112).

Glutathione plays a particularly important role in enabling and modulating the immune response (76). It is vital for proliferation of T lymphocytes; T cell activation, in turn, generates glutathione, which counters ROS levels and mediates a metabolic shift toward aerobic glycolysis and glutaminolysis (113)

Other connections between inflammation and redox imbalance exist as well. Higher interleukin-2 (IL-2) levels stimulate NO production (114, 115), and IL-6 and tumor necrosis factor- $\alpha$  (TNF- $\alpha$ ) stimulate cells to produce O<sub>2</sub><sup>•-</sup> (116, 117). Mitochondrial dysfunction also leads to increased proinflammatory responses and increased ROS levels.

**Inflammation in COVID-19 and Redox Imbalance.** The cytokine storm seen in severe cases of COVID-19 has been well characterized (118, 119). The nucleotide-binding oligomerization domain-like receptor containing pyrin domain 3 (NLRP3) inflammasome plays a key role in the effects of the cytokine storm; NLRP3, in turn, is activated by oxidative stress (118). Increased levels of the proinflammatory markers, C-reactive protein and IL-6, were associated with the disease (120).

Immunologic factors that correlated with more severe disease and higher mortality include neutrophilia, lymphocytopenia, low CD4<sup>+</sup> T cells, decreased C3, very low human leukocyte antigen D-related expression, and low numbers of CD19 lymphocytes and natural killer (NK) cells (121). In addition to these changes, COVID-19 is associated with inadequate Type I and Type III IFN responses and elevated chemokine expression (122–124). Finally, T cell exhaustion is commonly seen in COVID-19 and could be explained by low levels of glutathione (125).

**Inflammation in ME/CFS and Redox Imbalance.** The fatigue and cognitive deficits in people with ME/CFS are associated with neuroinflammation; positron emission tomography imaging reveals increased activation of microglia, astrocytes, and elevated

levels of cytokines in the brain and spinal cord (126, 127). Increased levels of various cytokines can trigger many of the symptoms of ME/CFS (and post-COVID-19 syndrome), as became clear in the 1980s when various cytokines were synthesized and used as treatments. For example, when IFN I- $\alpha$  is given as antiviral therapy, it induces persistent fatigue in patients with chronic hepatitis C virus infection (128).

In ME/CFS, the systemic circulation often contains elevated levels of inflammatory biomarkers—proinflammatory cytokines like IL-1 and TNF- $\alpha$  (106). Also, circulating lymphocytes often produce increased transcripts of these cytokines (129). Both COVID-19 and ME/CFS are associated with activation of the protein kinase R and 2- to 5A synthetase antiviral IFN response pathways (130–132).

People with ME/CFS often have increased numbers of CD8<sup>+</sup> T cells bearing activation antigens (133), although persistent T cell activation then may lead to exhaustion (134). Another characteristic finding in people with ME/CFS is impaired NK cell function (135). Redox imbalance leading to increased levels of L-kynurenine and lactate can impair NK cell function (136).

### Connecting Redox Imbalance, Inflammation, and Energy Metabolism

Viral infection triggers increased mitochondrial function and sometimes, mitochondrial damage. In either case, increased ROS are produced. ROS, in turn, damage mtDNA and proteins, including those comprising the ETC, causing a decrease in ATP production (137, 138). In COVID-19, damage to endothelial cells results in chronic inflammation, thrombosis, atherosclerosis, and lung injury. Endothelial mitochondria modulate these inflammatory pathways via redox signaling, involving mtROS. However, continued elevation of mtROS leads to senescence, promoting inflammation and chronic endothelial dysfunction, culminating in vicious cycles that involve ROS, inflammation, and mitochondrial dysfunction (139, 140).

A mode by which mitochondrial dysfunction causes inflammation is by activating the NLRP3 inflammasome in immune cells. The NLRP3 inflammasome participates in the processing and release of inflammatory cytokines, such as IL-1 $\beta$  and IL-18 (141). Damaged ROS-generating mitochondria can elicit persistent inflammation via NLRP3 inflammasome-dependent inflammatory pathways (142). Additionally, damaged mitochondria mount inflammatory responses by releasing mtDNA into the cytosol; the DNA and its purinergic components function as a damage-activated molecular pattern to trigger the innate immune system (143, 144). Finally, mitochondria also modulate both adaptive and innate immune responses (143, 145, 146). In COVID-19, a dysregulation of the innate immune system has been observed, causing aberrant engagement of antiviral signaling cascades, which facilitates evasion of the host immune system and which is linked to mitochondrial function as described earlier (85, 86, 147). Thus, infection and inflammation are intimately linked to energy metabolism and redox imbalance (Fig. 2).

### Hypometabolic State, the Cell Danger Response, and Integrated Stress Response

What might cause the hypometabolic state reported in ME/CFS? Dysregulated H<sub>2</sub>S production can induce a hypometabolic, torpor-like state in mice (73, 74). In addition, any of several stressors, including viral infection and oxidative stress, can trigger evolutionarily conserved protective responses that operate at the level of both the cell (the cell danger response) (148) and the whole organism (the integrated stress response, hibernation, and the state of dauer in *Caenorhabditis elegans*) (121, 149, 150). These protective responses generally are reversible when the stressor no longer is present. Since dysregulated H<sub>2</sub>S production can induce a hypometabolic, torpor-like state in mice

(74), H<sub>2</sub>S production may be one potential switch (73). Since protein translation consumes considerable ATP, a reduction in protein translation thereby makes ATP available for repair of injury and preservation of vital functions.

The hypometabolic state seen in ME/CFS (and that may be seen in PASC) could be secondary to a persisting stressor (such as redox imbalance or viral infection), or it could result from a defect in the “switch” that turns off the protective state. Abnormalities in purinergic signaling secondary to mitochondrial damage (151, 152) and mitochondrial dysfunction of any cause (153) are often associated with cellular and organism stress responses, and each has been linked to a wide variety of neurological disorders.

### Potential Redox-Based Therapeutics

Several therapies targeting redox imbalance already have been utilized or proposed for the treatment of disease. NO inhibits the replication of SARS-CoV-2 in vitro (154) and improves oxygenation in people with COVID-19 when administered by inhalation (155). Small studies of ubiquinol (156) and of a combination of NADH and CoQ10 (157) have reported clinical benefit. Many other potential treatments targeting redox imbalance also deserve consideration: for example, glutathione (and glutathione donors), N-acetyl cysteine, cysteamine, sulforaphane, ubiquinol, nicotinamide, melatonin, selenium, vitamin C, vitamin D, vitamin E, melatonin plus pentoxifylline, disulfiram, ebselen, and corticosteroids. In two cases of acute COVID-19, glutathione administered therapeutically counteracted dyspnea associated with COVID-19 pneumonia and reduced pulmonary inflammation (158).

In rodents, administering H<sub>2</sub>S donors reduced inflammation and oxidative stress and attenuated ventilator-induced lung injury as well as injury induced by pneumonia (159, 160). In addition, the H<sub>2</sub>S donor, GYY4137, suppressed replication of enveloped RNA viruses like SARS-CoV-2 (161–163). Additionally, the H<sub>2</sub>S donor, sodium hydrosulfide, inhibits platelet activation, NET formation, DNA, and ROS levels while decreasing SOD in the hyperhomocysteinemia (HHcy) group (164). Thus, treatment of acute COVID-19 with H<sub>2</sub>S donors may be efficacious (165).

A screen for inhibitors of the main protease of SARS-CoV-2 identified ebselen, an organoselenium compound, as a potential inhibitor for the protease, M<sup>Pro</sup> or NSP5, and a therapeutic agent for COVID-19 (166, 167).

In general, however, oral therapies directed at restoring redox balance have not produced dramatic improvements in conditions associated with redox imbalance (168). No single antioxidant can scavenge or neutralize the wide variety of ROS and RNS single-handedly. Hence, up-regulating pathways that counteract multiple abnormalities and bolster antioxidant defense and balance may be more beneficial. The timing of intervention may also be critical.

### Concluding Remarks

People with acute COVID-19 and people with ME/CFS share redox imbalance, systemic inflammation and neuroinflammation, impaired production of ATP and other abnormalities in common (Fig. 2), abnormalities that have bidirectional connections (169).

The syndrome of long COVID-19 that can develop in some COVID-19 survivors (people called “long haulers”) is very similar to ME/CFS, so it may well be that the group of abnormalities seen in acute COVID-19 and in ME/CFS also will be seen in long COVID-19. Presumably, redox abnormalities in COVID-19 are secondary to the infection with SARS-CoV-2. The same may be true among those ME/CFS patients whose illness began with an “infectious-like” illness.

Clearly, COVID-19-induced permanent damage to the lungs (chronic hypoxia), heart (congestive failure), and kidneys (fluid and acid-base abnormalities) could cause some of the persisting symptoms seen in long COVID-19. In both long COVID-19 and ME/CFS other symptoms (e.g., fatigue, brain fog) may be generated by neuroinflammation, reduced cerebral perfusion due to autonomic dysfunction, and autoantibodies directed at neural targets, as summarized elsewhere (170).

As many as 2.5 million people suffer from ME/CFS in the United States (6). The COVID-19 pandemic may generate a similar number of cases of long COVID-19 in the coming 1 to 2 y (5). It therefore is imperative that increased research be focused on both long COVID-19 and ME/CFS. Fortunately, the United States and several other countries have committed substantial funding to study chronic illnesses following COVID-19, one of which is long COVID-19. Two registries and associated biobanks of people with long COVID-19 and/or ME/CFS are available to aid research.\* We suggest that the study of the connections between redox imbalance, inflammation, and energy metabolism in long COVID-19 and in ME/CFS may lead to improvements in both new diagnostics and therapies.

**Data Availability.** There are no data underlying this work.

### Acknowledgments

This work was supported by Solve ME/CFS Initiative Grant 90089823 (to B.D.P.); the American Heart Association/Paul Allen Frontiers Group Project 19PABH134580006 (to B.D.P., S.H.S., and associates); US Public Health Service Grant 5U54AI138370 (to A.L.K.); and US Public Health Service Grant DA044123 (to S.H.S.). We acknowledge BioRender for the use of icons in figures and thank Julia Lemle for her artistic input in Fig. 2. A.L.K. thanks Jill Mazzetta for help in collecting pertinent literature. We thank the reviewers for several valuable suggestions.

\*They are the You + M.E. Registry (<https://youandmecovid.com/home>) and NIH (<https://searchmecfs.org/>).

- 1 Z. Al-Aly, Y. Xie, B. Bowe, High-dimensional characterization of post-acute sequelae of COVID-19. *Nature* **594**, 259–264 (2021).
- 2 X. Zhang *et al.*, Epidemiological, clinical characteristics of cases of SARS-CoV-2 infection with abnormal imaging findings. *Int. J. Infect. Dis.* **94**, 81–87 (2020).
- 3 N. P. Disser *et al.*, Musculoskeletal consequences of COVID-19. *J. Bone Joint Surg. Am.* **102**, 1197–1204 (2020).
- 4 M. H. Lee *et al.*, Microvascular injury in the brains of patients with COVID-19. *N. Engl. J. Med.* **384**, 481–483 (2021).
- 5 A. L. Komaroff, L. Bateman, Will COVID-19 lead to myalgic encephalomyelitis/chronic fatigue syndrome? *Front. Med. (Lausanne)* **7**, 606824 (2021).
- 6 Institute of Medicine, *Beyond Myalgic Encephalomyelitis/Chronic Fatigue Syndrome: Redefining an Illness* (National Institutes of Health, Washington, DC, 2015).
- 7 I. Pérez-Torres, L. Manzano-Pech, M. E. Rubio-Ruiz, M. E. Soto, V. Guarner-Lans, Nitrosative stress and its association with cardiometabolic disorders. *Molecules* **25**, E2555 (2020).
- 8 H. Sies, C. Berndt, D. P. Jones, Oxidative stress. *Annu. Rev. Biochem.* **86**, 715–748 (2017).
- 9 H. Sies, D. P. Jones, Reactive oxygen species (ROS) as pleiotropic physiological signalling agents. *Nat. Rev. Mol. Cell Biol.* **21**, 363–383 (2020).
- 10 O. A. Khomich, S. N. Kochetkov, B. Bartosch, A. V. Ivanov, Redox biology of respiratory viral infections. *Viruses* **10**, E392 (2018).
- 11 B. V. Chernyak *et al.*, COVID-19 and oxidative stress. *Biochemistry (Mosc.)* **85**, 1543–1553 (2020).
- 12 A. S. Abouhashem, K. Singh, H. M. E. Azzazy, C. K. Sen, Is low alveolar type II cell SOD3 in the lungs of elderly linked to the observed severity of COVID-19? *Antioxid. Redox Signal.* **33**, 59–65 (2020).

- 13 M. Hoffmann *et al.*, SARS-CoV-2 cell entry depends on ACE2 and TMPRSS2 and is blocked by a clinically proven protease inhibitor. *Cell* **181**, 271–280.e8 (2020).
- 14 S. Rajagopalan *et al.*, Angiotensin II-mediated hypertension in the rat increases vascular superoxide production via membrane NADH/NADPH oxidase activation. Contribution to alterations of vasomotor tone. *J. Clin. Invest.* **97**, 1916–1923 (1996).
- 15 F. Silvagno, A. Vernone, G. P. Pescarmona, The role of glutathione in protecting against the severe inflammatory response triggered by COVID-19. *Antioxidants* **9**, E624 (2020).
- 16 S. Hati, S. Bhattacharyya, Impact of thiol-disulfide balance on the binding of COVID-19 spike protein with angiotensin-converting enzyme 2 receptor. *ACS Omega* **5**, 16292–16298 (2020).
- 17 J. Singh, R. S. Dhindsa, V. Misra, B. Singh, SARS-CoV2 infectivity is potentially modulated by host redox status. *Comput. Struct. Biotechnol. J.* **18**, 3705–3711 (2020).
- 18 J. Lan *et al.*, Structure of the SARS-CoV-2 spike receptor-binding domain bound to the ACE2 receptor. *Nature* **581**, 215–220 (2020).
- 19 R. Yan *et al.*, Structural basis for the recognition of SARS-CoV-2 by full-length human ACE2. *Science* **367**, 1444–1448 (2020).
- 20 D. P. Jones, V. C. Mody Jr., J. L. Carlson, M. J. Lynn, P. Sternberg Jr., Redox analysis of human plasma allows separation of pro-oxidant events of aging from decline in antioxidant defenses. *Free Radic. Biol. Med.* **33**, 1290–1300 (2002).
- 21 D. Giustarini, A. Santucci, D. Bartolini, F. Galli, R. Rossi, The age-dependent decline of the extracellular thiol-disulfide balance and its role in SARS-CoV-2 infection. *Redox Biol.* **41**, 101902 (2021).
- 22 S. Fukuda *et al.*, A potential biomarker for fatigue: Oxidative stress and anti-oxidative activity. *Biol. Psychol.* **118**, 88–93 (2016).
- 23 K. Miwa, M. Fujita, Fluctuation of serum vitamin E (alpha-tocopherol) concentrations during exacerbation and remission phases in patients with chronic fatigue syndrome. *Heart Vessels* **25**, 319–323 (2010).
- 24 M. Maes, M. Kubera, M. Uytendaele, N. Vrydags, E. Bosmans, Increased plasma peroxides as a marker of oxidative stress in myalgic encephalomyelitis/chronic fatigue syndrome (ME/CFS). *Med. Sci. Monit.* **17**, SC11–SC15 (2011).
- 25 M. Robinson *et al.*, Plasma IL-6, its soluble receptors and F2-isoprostanes at rest and during exercise in chronic fatigue syndrome. *Scand. J. Med. Sci. Sports* **20**, 282–290 (2010).
- 26 B. Manuel y Keenoy, G. Moorkens, J. Vertommen, I. De Leeuw, Antioxidant status and lipoprotein peroxidation in chronic fatigue syndrome. *Life Sci.* **68**, 2037–2049 (2001).
- 27 R. K. Kurup, P. A. Kurup, Hypothalamic digoxin, cerebral chemical dominance and myalgic encephalomyelitis. *Int. J. Neurosci.* **113**, 683–701 (2003).
- 28 I. V. Smirnova, M. L. Pall, Elevated levels of protein carbonyls in sera of chronic fatigue syndrome patients. *Mol. Cell. Biochem.* **248**, 93–95 (2003).
- 29 Y. Jammes, J. G. Steinberg, O. Mambri, F. Brégeon, S. Delliaux, Chronic fatigue syndrome: Assessment of increased oxidative stress and altered muscle excitability in response to incremental exercise. *J. Intern. Med.* **257**, 299–310 (2005).
- 30 S. Brkic, S. Tomic, D. Maric, A. Novakov Mikic, V. Turkulov, Lipid peroxidation is elevated in female patients with chronic fatigue syndrome. *Med. Sci. Monit.* **16**, CR628–CR632 (2010).
- 31 E. Fenouillet *et al.*, Association of biomarkers with health-related quality of life and history of stressors in myalgic encephalomyelitis/chronic fatigue syndrome patients. *J. Transl. Med.* **14**, 251 (2016).
- 32 Y. Jammes, J. G. Steinberg, R. Guieu, S. Delliaux, Chronic fatigue syndrome with history of severe infection combined altered blood oxidant status, and reduced potassium efflux and muscle excitability at exercise. *Open J. Int. Med.* **3**, 98–105 (2013).
- 33 D. C. Shungu *et al.*, Increased ventricular lactate in chronic fatigue syndrome. III. Relationships to cortical glutathione and clinical symptoms implicate oxidative stress in disorder pathophysiology. *NMR Biomed.* **25**, 1073–1087 (2012).
- 34 J. W. Murrrough *et al.*, Increased ventricular lactate in chronic fatigue syndrome measured by 1H MRS imaging at 3.0 T. II. Comparison with major depressive disorder. *NMR Biomed.* **23**, 643–650 (2010).
- 35 S. J. Mathew *et al.*, Ventricular cerebrospinal fluid lactate is increased in chronic fatigue syndrome compared with generalized anxiety disorder: An in vivo 3.0 T (1)H MRS imaging study. *NMR Biomed.* **22**, 251–258 (2009).
- 36 A. Suárez *et al.*, Nitric oxide metabolite production during exercise in chronic fatigue syndrome: A case-control study. *J. Womens Health (Larchmt.)* **19**, 1073–1077 (2010).
- 37 G. Morris, M. Maes, Oxidative and nitrosative stress and immune-inflammatory pathways in patients with myalgic encephalomyelitis (ME)/chronic fatigue syndrome (CFS). *Curr. Neuropharmacol.* **12**, 168–185 (2014).
- 38 G. Morris *et al.*, Nitrosative stress, hypernitrosylation, and autoimmune responses to nitrosylated proteins: New pathways in neuroprogressive disorders including depression and chronic fatigue syndrome. *Mol. Neurobiol.* **54**, 4271–4291 (2017).
- 39 M. Maes, I. Mihaylova, J. C. Leunis, Chronic fatigue syndrome is accompanied by an IgM-related immune response directed against neopeptides formed by oxidative or nitrosative damage to lipids and proteins. *Neuroendocrinol. Lett.* **27**, 615–621 (2006).
- 40 D. Nagy-Szakal *et al.*, Insights into myalgic encephalomyelitis/chronic fatigue syndrome phenotypes through comprehensive metabolomics. *Sci. Rep.* **8**, 10056 (2018).
- 41 R. K. Naviaux *et al.*, Metabolic features of chronic fatigue syndrome. *Proc. Natl. Acad. Sci. U.S.A.* **113**, E5472–E5480 (2016).
- 42 A. Germain, D. Ruppert, S. M. Levine, M. R. Hanson, Metabolic profiling of a myalgic encephalomyelitis/chronic fatigue syndrome discovery cohort reveals disturbances in fatty acid and lipid metabolism. *Mol. Biosyst.* **13**, 371–379 (2017).
- 43 A. Germain, D. Ruppert, S. M. Levine, M. R. Hanson, Prospective biomarkers from plasma metabolomics of myalgic encephalomyelitis/chronic fatigue syndrome implicate redox imbalance in disease symptomatology. *Metabolites* **8**, E90 (2018).
- 44 J. I. Sbdio, S. H. Snyder, B. D. Paul, Redox mechanisms in neurodegeneration: From disease outcomes to therapeutic opportunities. *Antioxid. Redox Signal.* **30**, 1450–1499 (2019).
- 45 S. Recalcati, P. Invernizzi, P. Arosio, G. Cairo, New functions for an iron storage protein: The role of ferritin in immunity and autoimmunity. *J. Autoimmun.* **30**, 84–89 (2008).
- 46 T. W. Sedlak *et al.*, Bilirubin and glutathione have complementary antioxidant and cytoprotective roles. *Proc. Natl. Acad. Sci. U.S.A.* **106**, 5171–5176 (2009).
- 47 C. Vasavda *et al.*, Bilirubin links heme metabolism to neuroprotection by scavenging superoxide. *Cell Chem. Biol.* **26**, 1450–1460.e7 (2019).
- 48 B. D. Paul, S. H. Snyder, H<sub>2</sub>S signalling through protein sulfhydration and beyond. *Nat. Rev. Mol. Cell Biol.* **13**, 499–507 (2012).
- 49 A. D. Kaye *et al.*, Folic acid supplementation in patients with elevated homocysteine levels. *Adv. Ther.* **37**, 4149–4164 (2020).
- 50 M. Laforge *et al.*, Tissue damage from neutrophil-induced oxidative stress in COVID-19. *Nat. Rev. Immunol.* **20**, 515–516 (2020). *Erratum in: Nat. Rev. Immunol.* **20**, 579 (2020).
- 51 E. A. Middleton *et al.*, Neutrophil extracellular traps contribute to immunothrombosis in COVID-19 acute respiratory distress syndrome. *Blood* **136**, 1169–1179 (2020).
- 52 V. Papayannopoulos, Neutrophil extracellular traps in immunity and disease. *Nat. Rev. Immunol.* **18**, 134–147 (2018).
- 53 Y. Zuo *et al.*, Neutrophil extracellular traps in COVID-19. *JCI Insight* **5**, 138999 (2020).
- 54 A. K. Mustafa, M. M. Gadalla, S. H. Snyder, Signaling by gasotransmitters. *Sci. Signal.* **2**, re2 (2009).
- 55 L. J. Ignarro, Nitric oxide as a unique signaling molecule in the vascular system: A historical overview. *J. Physiol. Pharmacol.* **53**, 503–514 (2002).
- 56 L. J. Ignarro, Physiology and pathophysiology of nitric oxide. *Kidney Int. Suppl.* **55**, S2–S5 (1996).
- 57 B. D. Paul, S. H. Snyder, Modes of physiologic H<sub>2</sub>S signaling in the brain and peripheral tissues. *Antioxid. Redox Signal.* **22**, 411–423 (2015).
- 58 R. Karki *et al.*, Synergism of TNF- $\alpha$  and IFN- $\gamma$  triggers inflammatory cell death, tissue damage, and mortality in SARS-CoV-2 infection and cytokine shock syndromes. *Cell* **184**, 149–168.e17 (2021).

- 59 M. L. Pall, Levels of nitric oxide synthase product citrulline are elevated in sera of chronic fatigue syndrome patients. *J. Chronic Fatigue Syndr.* **10**, 37–41 (2002).
- 60 M. R. Filipovic, J. Zivanovic, B. Alvarez, R. Banerjee, Chemical biology of H<sub>2</sub>S signaling through persulfidation. *Chem. Rev.* **118**, 1253–1337 (2018).
- 61 S. Yuan, X. Shen, C. G. Kevil, Beyond a gasotransmitter: Hydrogen sulfide and polysulfide in cardiovascular health and immune response. *Antioxid. Redox Signal.* **27**, 634–653 (2017).
- 62 A. K. Mustafa et al., H<sub>2</sub>S signals through protein S-sulfhydration. *Sci. Signal.* **2**, ra72 (2009).
- 63 J. Zivanovic et al., Selective persulfide detection reveals evolutionarily conserved antiaging effects of S-sulfhydration. *Cell Metab.* **30**, 1152–1170.e13 (2019).
- 64 E. Dóka et al., Control of protein function through oxidation and reduction of persulfidated states. *Sci. Adv.* **6**, eaax8358 (2020).
- 65 B. D. Paul, S. H. Snyder, Gasotransmitter hydrogen sulfide signaling in neuronal health and disease. *Biochem. Pharmacol.* **149**, 101–109 (2018).
- 66 B. D. Paul et al., Cystathionine  $\gamma$ -lyase deficiency mediates neurodegeneration in Huntington's disease. *Nature* **509**, 96–100 (2014).
- 67 M. S. Vandiver et al., Sulfhydration mediates neuroprotective actions of parkin. *Nat. Commun.* **4**, 1626 (2013).
- 68 D. Giovinazzo et al., Hydrogen sulfide is neuroprotective in Alzheimer's disease by sulfhydrating GSK3 $\beta$  and inhibiting Tau hyperphosphorylation. *Proc. Natl. Acad. Sci. U.S.A.* **118**, e2017225118 (2021).
- 69 B. D. Paul, Neuroprotective roles of the reverse transsulfuration pathway in Alzheimer's disease. *Front. Aging Neurosci.* **13**, 659402 (2021).
- 70 G. Renieris et al., Serum hydrogen sulfide and outcome association in pneumonia by the SARS-CoV-2 coronavirus. *Shock* **54**, 633–637 (2020).
- 71 T. W. Miller et al., Hydrogen sulfide is an endogenous potentiator of T cell activation. *J. Biol. Chem.* **287**, 4211–4221 (2012).
- 72 P. Dominic et al., Decreased availability of nitric oxide and hydrogen sulfide is a hallmark of COVID-19. *Redox Biol.* **43**, 101982 (2021).
- 73 M. D. Lemle, Hypothesis: Chronic fatigue syndrome is caused by dysregulation of hydrogen sulfide metabolism. *Med. Hypotheses* **72**, 108–109 (2009).
- 74 E. Blackstone, M. Morrison, M. B. Roth, H<sub>2</sub>S induces a suspended animation-like state in mice. *Science* **308**, 518 (2005).
- 75 I. Cervenka, L. Z. Agudelo, J. L. Ruas, Kynurenes: Tryptophan's metabolites in exercise, inflammation, and mental health. *Science* **357**, eaaf9794 (2017).
- 76 W. Dröge, R. Breitkreutz, Glutathione and immune function. *Proc. Nutr. Soc.* **59**, 595–600 (2000).
- 77 W. Dröge et al., Functions of glutathione and glutathione disulfide in immunology and immunopathology. *FASEB J.* **8**, 1131–1138 (1994).
- 78 S. K. Jain, R. Parsanathan, A. E. Achari, P. Kanikarla-Marie, J. A. Bocchini Jr., Glutathione stimulates vitamin D regulatory and glucose-metabolism genes, lowers oxidative stress and inflammation, and increases 25-hydroxy-vitamin D levels in blood: A novel approach to treat 25-hydroxyvitamin D deficiency. *Antioxid. Redox Signal.* **29**, 1792–1807 (2018).
- 79 S. K. Jain, D. Micinski, Vitamin D upregulates glutamate cysteine ligase and glutathione reductase, and GSH formation, and decreases ROS and MCP-1 and IL-8 secretion in high-glucose exposed U937 monocytes. *Biochem. Biophys. Res. Commun.* **437**, 7–11 (2013).
- 80 J. I. Sbodio, S. H. Snyder, B. D. Paul, Regulators of the transsulfuration pathway. *Br. J. Pharmacol.* **176**, 583–593 (2019).
- 81 S. Mousavi, S. Bereswill, M. M. Heimesaat, Immunomodulatory and antimicrobial effects of vitamin C. *Eur. J. Microbiol. Immunol. (Bp.)* **9**, 73–79 (2019).
- 82 C. Schneider, Chemistry and biology of vitamin E. *Mol. Nutr. Food Res.* **49**, 7–30 (2005).
- 83 K. Filler et al., Association of mitochondrial dysfunction and fatigue: A review of the literature. *BBA Clin.* **1**, 12–23 (2014).
- 84 W. M. Behan, I. A. More, P. O. Behan, Mitochondrial abnormalities in the postviral fatigue syndrome. *Acta Neuropathol.* **83**, 61–65 (1991).
- 85 K. K. Singh, G. Chaubey, J. Y. Chen, P. Suravajhala, Decoding SARS-CoV-2 hijacking of host mitochondria in COVID-19 pathogenesis. *Am. J. Physiol. Cell Physiol.* **319**, C258–C267 (2020).
- 86 J. Wu et al., SARS-CoV-2 ORF9b inhibits RIG-I-MAVS antiviral signaling by interrupting K63-linked ubiquitination of NEMO. *Cell Rep.* **34**, 108761 (2021).
- 87 S. Ajaz et al., Mitochondrial metabolic manipulation by SARS-CoV-2 in peripheral blood mononuclear cells of patients with COVID-19. *Am. J. Physiol. Cell Physiol.* **320**, C57–C65 (2021).
- 88 A. C. Codo et al., Elevated glucose levels favor SARS-CoV-2 infection and monocyte response through a HIF-1 $\alpha$ /glycolysis-dependent axis. *Cell Metab.* (2020).
- 89 C. S. Santos et al., Determinants of COVID-19 disease severity in patients with underlying rheumatic disease. *Clin. Rheumatol.* **39**, 2789–2796 (2020).
- 90 D. Wang et al., Clinical characteristics of 138 hospitalized patients with 2019 novel coronavirus-infected pneumonia in Wuhan, China. *JAMA* **323**, 1061–1069 (2020).
- 91 C. Tomas, J. L. Elson, J. L. Newton, M. Walker, Substrate utilisation of cultured skeletal muscle cells in patients with CFS. *Sci. Rep.* **10**, 18232 (2020).
- 92 C. Tomas, J. L. Elson, V. Strassheim, J. L. Newton, M. Walker, The effect of myalgic encephalomyelitis/chronic fatigue syndrome (ME/CFS) severity on cellular bioenergetic function. *PLoS One* **15**, e0231136 (2020).
- 93 Ø. Fluge et al., Metabolic profiling indicates impaired pyruvate dehydrogenase function in myalgic encephalopathy/chronic fatigue syndrome. *JCI Insight* **1**, e89376 (2016).
- 94 E. Yamano et al., Index markers of chronic fatigue syndrome with dysfunction of TCA and urea cycles. *Sci. Rep.* **6**, 34990 (2016).
- 95 P. Billing-Ross et al., Mitochondrial DNA variants correlate with symptoms in myalgic encephalomyelitis/chronic fatigue syndrome. *J. Transl. Med.* **14**, 19 (2016).
- 96 D. Missailidis et al., An isolated complex V inefficiency and dysregulated mitochondrial function in immortalized lymphocytes from ME/CFS patients. *Int. J. Mol. Sci.* **21**, E1074 (2020).
- 97 E. Sweetman et al., A SWATH-MS analysis of myalgic encephalomyelitis/chronic fatigue syndrome peripheral blood mononuclear cell proteomes reveals mitochondrial dysfunction. *J. Transl. Med.* **18**, 365 (2020).
- 98 A. H. Mandarano et al., Myalgic encephalomyelitis/chronic fatigue syndrome patients exhibit altered T cell metabolism and cytokine associations. *J. Clin. Invest.* **130**, 1491–1505 (2020).
- 99 P. Schreiner et al., Human herpesvirus-6 reactivation, mitochondrial fragmentation, and the coordination of antiviral and metabolic phenotypes in myalgic encephalomyelitis/chronic fatigue syndrome. *Immunohorizons* **4**, 201–215 (2020).
- 100 C. R. Snell, S. R. Stevens, T. E. Davenport, J. M. Van Ness, Discriminative validity of metabolic and workload measurements for identifying people with chronic fatigue syndrome. *Phys. Ther.* **93**, 1484–1492 (2013).
- 101 R. C. Vermeulen, I. W. Vermeulen van Eck, Decreased oxygen extraction during cardiopulmonary exercise test in patients with chronic fatigue syndrome. *J. Transl. Med.* **12**, 20 (2014).
- 102 K. Lien et al., Abnormal blood lactate accumulation during repeated exercise testing in myalgic encephalomyelitis/chronic fatigue syndrome. *Physiol. Rep.* **7**, e14138 (2019).
- 103 C. Mueller, J. C. Lin, S. Sheriff, A. A. Maudsley, J. W. Younger, Evidence of widespread metabolite abnormalities in myalgic encephalomyelitis/chronic fatigue syndrome: Assessment with whole-brain magnetic resonance spectroscopy. *Brain Imaging Behav.* **14**, 562–572 (2020).
- 104 K. G. Fegan, P. O. Behan, E. J. Bell, Myalgic encephalomyelitis: Report of an epidemic. *J. R. Coll. Gen. Pract.* **33**, 335–337 (1983).
- 105 M. Maes et al., Coenzyme Q10 deficiency in myalgic encephalomyelitis/chronic fatigue syndrome (ME/CFS) is related to fatigue, autonomic and neurocognitive symptoms and is another risk factor explaining the early mortality in ME/CFS due to cardiovascular disorder. *Neuroendocrinol. Lett.* **30**, 470–476 (2009).
- 106 M. Maes, F. N. Twisk, Why myalgic encephalomyelitis/chronic fatigue syndrome (ME/CFS) may kill you: Disorders in the inflammatory and oxidative and nitrosative stress (IO&NS) pathways may explain cardiovascular disorders in ME/CFS. *Neuroendocrinol. Lett.* **30**, 677–693 (2009).
- 107 X. Yang et al., Neuroprotection of coenzyme Q10 in neurodegenerative diseases. *Curr. Top. Med. Chem.* **16**, 858–866 (2016).
- 108 P. Fisicaro et al., Targeting mitochondrial dysfunction can restore antiviral activity of exhausted HBV-specific CD8 T cells in chronic hepatitis B. *Nat. Med.* **23**, 327–336 (2017).
- 109 M. Buoncervello et al., Inflammatory cytokines associated with cancer growth induce mitochondria and cytoskeleton alterations in cardiomyocytes. *J. Cell. Physiol.* **234**, 20453–20468 (2019).
- 110 J. Muri, M. Kopf, Redox regulation of immunometabolism. *Nat. Rev. Immunol.* **21**, 363–381 (2021).



- 111 M. Mittal, M. R. Siddiqui, K. Tran, S. P. Reddy, A. B. Malik, Reactive oxygen species in inflammation and tissue injury. *Antioxid. Redox Signal.* **20**, 1126–1167 (2014).
- 112 S. K. Biswas, Does the interdependence between oxidative stress and inflammation explain the antioxidant paradox? *Oxid. Med. Cell. Longev.* **2016**, 5698931 (2016).
- 113 G. Angelini *et al.*, Antigen-presenting dendritic cells provide the reducing extracellular microenvironment required for T lymphocyte activation. *Proc. Natl. Acad. Sci. U.S.A.* **99**, 1491–1496 (2002).
- 114 Y. Li, Y. Hu, J. Yu, T. Ma, Retrospective analysis of laboratory testing in 54 patients with severe- or critical-type 2019 novel coronavirus pneumonia. *Lab. Invest.* **100**, 794–800 (2020).
- 115 J. B. Hibbs Jr. *et al.*, Evidence for cytokine-inducible nitric oxide synthesis from L-arginine in patients receiving interleukin-2 therapy. *J. Clin. Invest.* **89**, 867–877 (1992).
- 116 M. Tsujimoto, S. Yokota, J. Vilcek, G. Weissmann, Tumor necrosis factor provokes superoxide anion generation from neutrophils. *Biochem. Biophys. Res. Commun.* **137**, 1094–1100 (1986).
- 117 A. Kharazmi, H. Nielsen, C. Rechnitzer, K. Bendtzen, Interleukin 6 primes human neutrophil and monocyte oxidative burst response. *Immunol. Lett.* **21**, 177–184 (1989).
- 118 P. Mehta *et al.*; HLH Across Specialty Collaboration, UK, COVID-19: Consider cytokine storm syndromes and immunosuppression. *Lancet* **395**, 1033–1034 (2020).
- 119 Z. Xu *et al.*, Pathological findings of COVID-19 associated with acute respiratory distress syndrome. *Lancet Respir. Med.* **8**, 420–422 (2020).
- 120 Y. Zhao *et al.*, Abnormal immunity of non-survivors with COVID-19: Predictors for mortality. *Infect. Dis. Poverty* **9**, 108 (2020).
- 121 B. J. Klug, R. M. Brigham, Changes to metabolism and cell physiology that enable mammalian hibernation. *Springer Sci. Rev.* **3**, 39–56 (2015).
- 122 Q. Zhang *et al.*; COVID-STORM Clinicians; COVID Clinicians; Imagine COVID Group; French COVID Cohort Study Group; CoV-Contact Cohort; Amsterdam UMC Covid-19 Biobank; COVID Human Genetic Effort; NIAID-USUHS/TAGC COVID Immunity Group, Inborn errors of type I IFN immunity in patients with life-threatening COVID-19. *Science* **370**, eabd4570 (2020).
- 123 P. Bastard *et al.*; HGID Lab; NIAID-USUHS Immune Response to COVID Group; COVID Clinicians; COVID-STORM Clinicians; Imagine COVID Group; French COVID Cohort Study Group; Milieu Intérieur Consortium; CoV-Contact Cohort; Amsterdam UMC Covid-19 Biobank; COVID Human Genetic Effort, Autoantibodies against type I IFNs in patients with life-threatening COVID-19. *Science* **370**, eabd4585 (2020).
- 124 D. Blanco-Melo *et al.*, Imbalanced host response to SARS-CoV-2 drives development of COVID-19. *Cell* **181**, 1036–1045.e9 (2020).
- 125 A. Khanfar, B. Al Qaroot, Could glutathione depletion be the Trojan horse of COVID-19 mortality? *Eur. Rev. Med. Pharmacol. Sci.* **24**, 12500–12509 (2020).
- 126 B. H. Natelson, S. A. Weaver, C. L. Tseng, J. E. Ottenweller, Spinal fluid abnormalities in patients with chronic fatigue syndrome. *Clin. Diagn. Lab. Immunol.* **12**, 52–55 (2005).
- 127 Y. Nakatomi *et al.*, Neuroinflammation in patients with chronic fatigue syndrome/myalgic encephalomyelitis: An <sup>11</sup>C-(R)-PK11195 PET study. *J. Nucl. Med.* **55**, 945–950 (2014).
- 128 A. Russell *et al.*, Persistent fatigue induced by interferon-alpha: A novel, inflammation-based, proxy model of chronic fatigue syndrome. *Psychoneuroendocrinology* **100**, 276–285 (2019).
- 129 E. Sweetman *et al.*, Changes in the transcriptome of circulating immune cells of a New Zealand cohort with myalgic encephalomyelitis/chronic fatigue syndrome. *Int. J. Immunopathol. Pharmacol.* **33**, 2058738418820402 (2019).
- 130 A. Vojdani, C. W. Lapp, Interferon-induced proteins are elevated in blood samples of patients with chemically or virally induced chronic fatigue syndrome. *Immunopharmacol. Immunotoxicol.* **21**, 175–202 (1999).
- 131 M. Meeus *et al.*, Unravelling intracellular immune dysfunctions in chronic fatigue syndrome: Interactions between protein kinase R activity, RNase L cleavage and elastase activity, and their clinical relevance. *In Vivo* **22**, 115–121 (2008).
- 132 G. Bjørklund *et al.*, Environmental, neuro-immune, and neuro-oxidative stress interactions in chronic fatigue syndrome. *Mol. Neurobiol.* **57**, 4598–4607 (2020).
- 133 E. Barker, S. F. Fujimura, M. B. Fadem, A. L. Landay, J. A. Levy, Immunologic abnormalities associated with chronic fatigue syndrome. *Clin. Infect. Dis.* **18** (suppl. 1), S136–S141 (1994).
- 134 M. Hornig *et al.*, Distinct plasma immune signatures in ME/CFS are present early in the course of illness. *Sci. Adv.* **1**, e1400121 (2015).
- 135 M. Caligiuri *et al.*, Phenotypic and functional deficiency of natural killer cells in patients with chronic fatigue syndrome. *J. Immunol.* **139**, 3306–3313 (1987).
- 136 L. Riggan, S. Shah, T. E. O'Sullivan, Arrested development: Suppression of NK cell function in the tumor microenvironment. *Clin. Transl. Immunology* **10**, e1238 (2021).
- 137 M. P. Murphy, How mitochondria produce reactive oxygen species. *Biochem. J.* **417**, 1–13 (2009).
- 138 G. Abate *et al.*, Mitochondria and cellular redox state on the route from ageing to Alzheimer's disease. *Mech. Ageing Dev.* **192**, 111385 (2020).
- 139 R. Chang, A. Mamun, A. Dominic, N. T. Le, SARS-CoV-2 mediated endothelial dysfunction: The potential role of chronic oxidative stress. *Front. Physiol.* **11**, 605908 (2021).
- 140 J. Saleh, C. Peyssonnaud, K. K. Singh, M. Edeas, Mitochondria and microbiota dysfunction in COVID-19 pathogenesis. *Mitochondrion* **54**, 1–7 (2020).
- 141 D. Sadatomi *et al.*, Mitochondrial function is required for extracellular ATP-induced NLRP3 inflammasome activation. *J. Biochem.* **161**, 503–512 (2017).
- 142 R. Zhou, A. S. Yazdi, P. Menu, J. Tschoop, A role for mitochondria in NLRP3 inflammasome activation. *Nature* **469**, 221–225 (2011).
- 143 E. L. Mills, B. Kelly, L. A. J. O'Neill, Mitochondria are the powerhouses of immunity. *Nat. Immunol.* **18**, 488–498 (2017).
- 144 B. D. Paul, S. H. Snyder, V. A. Bohr, Signaling by cGAS-STING in neurodegeneration, neuroinflammation, and aging. *Trends Neurosci.* **44**, 83–96 (2021).
- 145 C. N. S. Breda, G. G. Davanzo, P. J. Basso, N. O. Saraiva Câmara, P. M. M. Moraes-Vieira, Mitochondria as central hub of the immune system. *Redox Biol.* **26**, 101255 (2019).
- 146 S. E. Weinberg, L. A. Sena, N. S. Chandel, Mitochondria in the regulation of innate and adaptive immunity. *Immunity* **42**, 406–417 (2015).
- 147 J. L. Schultze, A. C. Aschenbrenner, COVID-19 and the human innate immune system. *Cell* **184**, 1671–1692 (2021).
- 148 R. K. Naviaux, Metabolic features and regulation of the healing cycle-A new model for chronic disease pathogenesis and treatment. *Mitochondrion* **46**, 278–297 (2019).
- 149 M. Costa-Mattoli, P. Walter, The integrated stress response: From mechanism to disease. *Science* **368**, eaat5314 (2020).
- 150 S. Penkov *et al.*, Integration of carbohydrate metabolism and redox state controls dauer larva formation in *Caenorhabditis elegans*. *Nat. Commun.* **6**, 8060 (2015).
- 151 G. Burnstock, An introduction to the roles of purinergic signalling in neurodegeneration, neuroprotection and neuroregeneration. *Neuropharmacology* **104**, 4–17 (2016).
- 152 Z. Zolkipli-Cunningham *et al.*, Metabolic and behavioral features of acute hyperpurinergia and the maternal immune activation mouse model of autism spectrum disorder. *PLoS One* **16**, e0248771 (2021).
- 153 L. Pei, D. C. Wallace, Mitochondrial etiology of neuropsychiatric disorders. *Biol. Psychiatry* **83**, 722–730 (2018).
- 154 D. Akaberi *et al.*, Mitigation of the replication of SARS-CoV-2 by nitric oxide in vitro. *Redox Biol.* **37**, 101734 (2020).
- 155 C. Lotz *et al.*, Effects of inhaled nitric oxide in COVID-19-induced ARDS - Is it worthwhile? *Acta Anaesthesiol. Scand.* **65**, 629–632 (2021).
- 156 S. Fukuda *et al.*, Ubiquinol-10 supplementation improves autonomic nervous function and cognitive function in chronic fatigue syndrome. *Biofactors* **42**, 431–440 (2016).
- 157 J. Castro-Marrero *et al.*, Does oral coenzyme Q10 plus NADH supplementation improve fatigue and biochemical parameters in chronic fatigue syndrome? *Antioxid. Redox Signal.* **22**, 679–685 (2015).

- 158 R. I. Horowitz, P. R. Freeman, J. Bruzzese, Efficacy of glutathione therapy in relieving dyspnea associated with COVID-19 pneumonia: A report of 2 cases. *Respir. Med. Case Rep.* **30**, 101063 (2020).
- 159 S. Faller et al., Pre- and posttreatment with hydrogen sulfide prevents ventilator-induced lung injury by limiting inflammation and oxidation. *PLoS One* **12**, e0176649 (2017).
- 160 M. B. Evgen'ev, A. Frenkel, Possible application of H<sub>2</sub>S-producing compounds in therapy of coronavirus (COVID-19) infection and pneumonia. *Cell Stress Chaperones* **25**, 713–715 (2020).
- 161 N. Bazhanov, O. Escaffre, A. N. Freiberg, R. P. Garofalo, A. Casola, Broad-range antiviral activity of hydrogen sulfide against highly pathogenic RNA viruses. *Sci. Rep.* **7**, 41029 (2017).
- 162 X. Roblin, J. Pofelski, J. P. Zarski, [Steatosis, chronic hepatitis virus C infection and homocysteine]. *Gastroenterol. Clin. Biol.* **31**, 415–420 (2007).
- 163 R. Deminice, T. C. Silva, V. H. de Oliveira, Elevated homocysteine levels in human immunodeficiency virus-infected patients under antiretroviral therapy: A meta-analysis. *World J. Virol.* **4**, 147–155 (2015).
- 164 X. Zhao et al., Exogenous hydrogen sulfide inhibits neutrophils extracellular traps formation via the HMGB1/TLR4/p-38 MAPK/ROS axis in hyperhomocysteinemia rats. *Biochem. Biophys. Res. Commun.* **537**, 7–14 (2021).
- 165 A. R. Bourgonje et al., N-acetylcysteine and hydrogen sulfide in coronavirus disease 2019. *Antioxid. Redox Signal.*, 10.1089/ars.2020.8247 (2021).
- 166 Z. Jin et al., Structure of M<sup>pro</sup> from SARS-CoV-2 and discovery of its inhibitors. *Nature* **582**, 289–293 (2020).
- 167 H. Sies, M. J. Parnham, Potential therapeutic use of ebselen for COVID-19 and other respiratory viral infections. *Free Radic. Biol. Med.* **156**, 107–112 (2020).
- 168 I. Barcelos, E. Shadiack, R. D. Ganetzky, M. J. Falk, Mitochondrial medicine therapies: Rationale, evidence, and dosing guidelines. *Curr. Opin. Pediatr.* **32**, 707–718 (2020).
- 169 D. Stanculescu, L. Larsson, J. Bergquist, Hypothesis: Mechanisms that prevent recovery in prolonged ICU patients also underlie myalgic encephalomyelitis/chronic fatigue syndrome (ME/CFS). *Front. Med. (Lausanne)* **8**, 628029 (2021).
- 170 A. L. Komaroff, W. I. Lipkin, Insights from myalgic encephalomyelitis/chronic fatigue syndrome may help unravel the pathogenesis of postacute COVID-19 syndrome. *Trends Mol. Med.*, 10.1016/j.molmed.2021.06.002 (2021).
- 171 F. Wang et al., The laboratory tests and host immunity of COVID-19 patients with different severity of illness. *JCI Insight* **5**, 137799 (2020).
- 172 K. Kappert, A. Jahić, R. Tauber, Assessment of serum ferritin as a biomarker in COVID-19: Bystander or participant? Insights by comparison with other infectious and non-infectious diseases. *Biomarkers* **25**, 616–625 (2020).
- 173 C. Perricone et al., COVID-19 as part of the hyperferritinemic syndromes: The role of iron depletion therapy. *Immunol. Res.* **68**, 213–224 (2020).
- 174 S. Colafrancesco, C. Alessandri, F. Conti, R. Priori, COVID-19 gone bad: A new character in the spectrum of the hyperferritinemic syndrome? *Autoimmun. Rev.* **19**, 102573 (2020).
- 175 J. W. Song et al., Omics-driven systems interrogation of metabolic dysregulation in COVID-19 pathogenesis. *Cell Metab.* **32**, 188–202.e5 (2020).
- 176 B. Shen et al., Proteomic and metabolomic characterization of COVID-19 patient sera. *Cell* **182**, 59–72.e15 (2020).
- 177 Z. Yang et al., Predictors for imaging progression on chest CT from coronavirus disease 2019 (COVID-19) patients. *Aging (Albany NY)* **12**, 6037–6048 (2020).
- 178 G. Ponti, C. Ruini, A. Tomasi, Homocysteine as a potential predictor of cardiovascular risk in patients with COVID-19. *Med. Hypotheses* **143**, 109859 (2020).
- 179 B. Regland et al., Increased concentrations of homocysteine in the cerebrospinal fluid in patients with fibromyalgia and chronic fatigue syndrome. *Scand. J. Rheumatol.* **26**, 301–307 (1997).
- 180 T. Pietrangelo et al., Transcription profile analysis of vastus lateralis muscle from patients with chronic fatigue syndrome. *Int. J. Immunopathol. Pharmacol.* **22**, 795–807 (2009).
- 181 B. Henry et al., Lymphopenia and neutrophilia at admission predicts severity and mortality in patients with COVID-19: A meta-analysis. *Acta Biomed.* **91**, e2020008 (2020).
- 182 E. W. Bvenu et al., Role of adaptive and innate immune cells in chronic fatigue syndrome/myalgic encephalomyelitis. *Int. Immunol.* **26**, 233–242 (2014).
- 183 T. Thomas et al., COVID-19 infection alters kynurenine and fatty acid metabolism, correlating with IL-6 levels and renal status. *JCI Insight* **5**, 140327 (2020).
- 184 C. D. Heer et al., Coronavirus infection and PARP expression dysregulate the NAD metabolome: An actionable component of innate immunity. *J. Biol. Chem.* **295**, 17986–17996 (2020).
- 185 A. Polonikov, Endogenous deficiency of glutathione as the most likely cause of serious manifestations and death in COVID-19 patients. *ACS Infect. Dis.* **6**, 1558–1562 (2020).
- 186 J. M. Rhodes, S. Subramanian, E. Laird, G. Griffin, R. A. Kenny, Perspective: Vitamin D deficiency and COVID-19 severity—plausibly linked by latitude, ethnicity, impacts on cytokines, ACE2, and thrombosis. *J. Intern. Med.* **289**, 97–115 (2021).
- 187 G. Kennedy et al., Oxidative stress levels are raised in chronic fatigue syndrome and are associated with clinical symptoms. *Free Radic. Biol. Med.* **39**, 584–589 (2005).
- 188 T. Aoki, H. Miyakoshi, Y. Usuda, R. B. Herberman, Low NK syndrome and its relationship to chronic fatigue syndrome. *Clin. Immunol. Immunopathol.* **69**, 253–265 (1993).
- 189 J. Zhang, E. W. Taylor, K. Bennett, R. Saad, M. P. Rayman, Association between regional selenium status and reported outcome of COVID-19 cases in China. *Am. J. Clin. Nutr.* **111**, 1297–1299 (2020).
- 190 P. R. Hoffmann, M. J. Berry, The influence of selenium on immune responses. *Mol. Nutr. Food Res.* **52**, 1273–1280 (2008).
- 191 H. Steinbrenner, S. Al-Quraishy, M. A. Dkhil, F. Wunderlich, H. Sies, Dietary selenium in adjuvant therapy of viral and bacterial infections. *Adv. Nutr.* **6**, 73–82 (2015).
- 192 L. Chiscano-Camón, J. C. Ruiz-Rodríguez, A. Ruiz-Sanmartín, O. Roca, R. Ferrer, Vitamin C levels in patients with SARS-CoV-2-associated acute respiratory distress syndrome. *Crit. Care* **24**, 522 (2020).
- 193 G. Kennedy, F. Khan, A. Hill, C. Underwood, J. J. Belch, Biochemical and vascular aspects of pediatric chronic fatigue syndrome. *Arch. Pediatr. Adolesc. Med.* **164**, 817–823 (2010).
- 194 C. D. Heer et al., Coronavirus infection and PARP expression dysregulate the NAD metabolome: An actionable component of innate immunity. *J. Biol. Chem.* **295**, 17986–17996 (2020).
- 195 S. A. Erol et al., Evaluation of maternal serum afamin and vitamin E levels in pregnant women with COVID-19 and its association with composite adverse perinatal outcomes. *J. Med. Virol.* **93**, 2350–2358 (2021).
- 196 J. Vecchiet et al., Relationship between musculoskeletal symptoms and blood markers of oxidative stress in patients with chronic fatigue syndrome. *Neurosci. Lett.* **335**, 151–154 (2003).